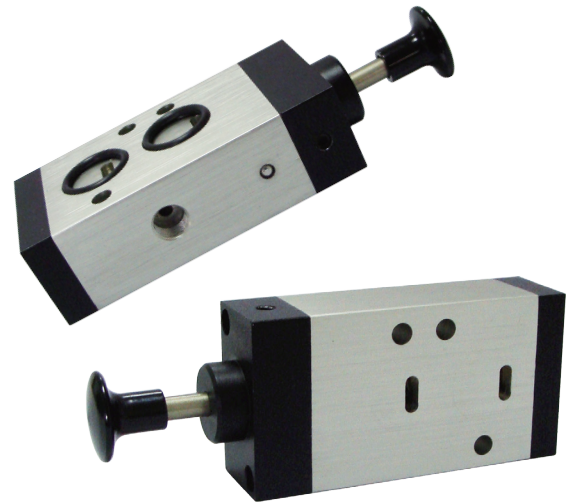


Flow Line

NV62 Block & Vent Valve NV42 Air Lock Valve



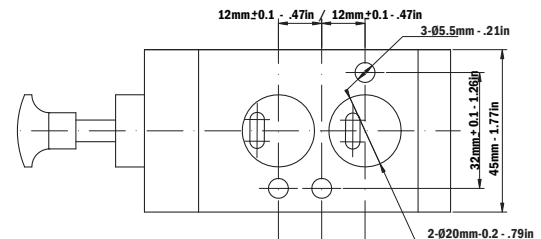
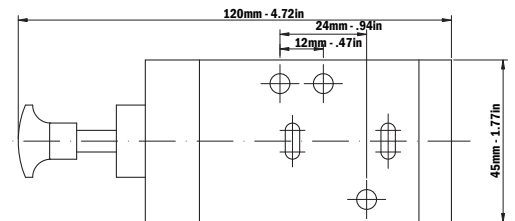
Introduction & Features:

The Flow Line Controls **NV62** is a 6-way, 2-position lever operated Lockout & Vent Valve that offers two primary functions. It may be used as pneumatic lockout valve and/or a vent valve. When the plunger is extended, air passes freely from the supply line to the pneumatic actuator. When the plunger is depressed, the supply air is locked out from the pneumatic actuator thus locking the actuator out of service by preventing it from being automatically stroked. At the same time **NV62** vents the internal pressure from the actuator pistons to the atmosphere. This allows the pneumatic actuator to be easily stroked manually and is ideal for de-clutch gear override applications.

The Flow Line Controls **NV42** a 4-way, 2-position lever operated valve. It is used to lock air inside double acting and spring return actuators. Typical application is to lock valve position in case of air line maintenance or in case of solenoid valve test or repair without moving the valve/actuator.

Specifications:

Temperature Range: -20F to +180F
 Pressure Range: 20psig to 120psig
 Media: Dry or lubricated non-corrosive gas
 compatible with nitrile seals
 Flow Coefficient: $C_v = 1.75$



Flow Line Valve and Controls, Inc.

P.O. Box 677 · Schriever, LA 70395 · Phone: 985-414-6004 · Toll Free 1-800-815-9226 · Fax 985-414-6072

www.flowlinevalves.com