

# FlowLine



**1/2" Solenoid Valve**  
**Namur Mount**

***Series 50***

# FEATURES

## Specifications

**Port Connections:** 1/2" NPT

**Power Consumption:** AC: 4.0VA, DC: 2.8W

**Duty Cycle:** Continuous (100%)

**Shortest Excitation Time:** 0.05 sec

**Coil Voltages:** 12 & 24 VDC, 120 & 220 VAC 50/60Hz

**Protection Class:** NEMA 4, 4X, NEMA 7 & 9

**Coil Insulation:** Class F standard, Class H optional

**Operating Speed:** 5 cycles per second

**Ambient Temperature Range:** 40F~122F, -40F optional

**Coil Connections:** Cable Gland, 1/2" Conduit/Potted leads, Din connector with potted leads

**Valve Design:** Pilot operated hi-flow spool, Cv 2.79

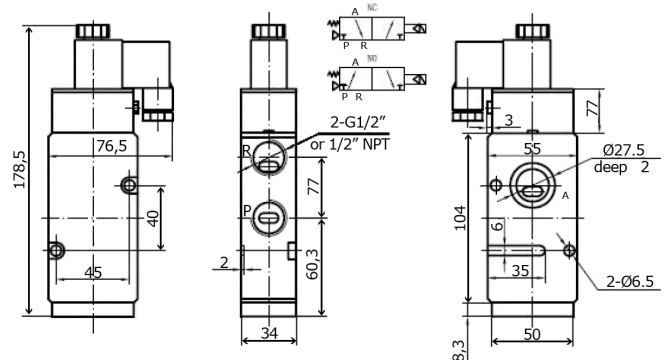
**Media:** Lubricated or non-lubricated air

**Operating Pressure Range:** 22psi and 120psi

**Materials:** Body: Hard Anodized Aluminum, Polyester coated.

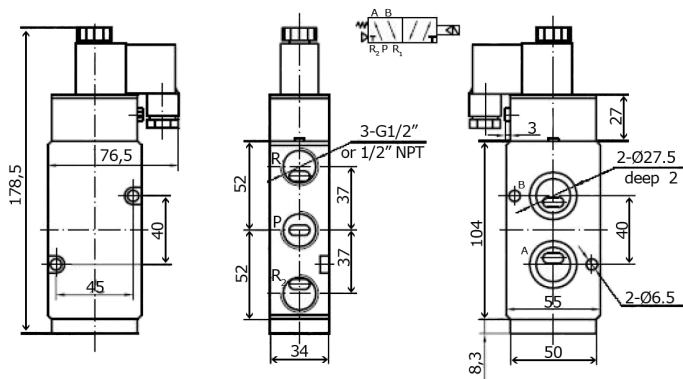
Spool & Piston: Aluminum, Spring: Stainless Steel, Seals: Buna N,

Screws: Stainless Steel

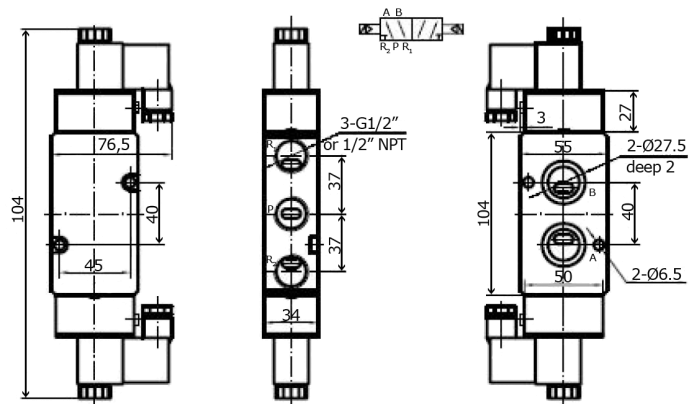


**3-Way Valve 1-Coil**

Dimensions in MM Reference: 10MM = 0.393"



**5-Way Valve 1-Coil**



**5-Way Valve 2-Coils**

\* Note: Consult factory for additional options.

**Flow Line Valve and Controls, Inc.**

PO Box 677, 110 Main Project Rd • Schriever, LA 70395 • Phone (985) 414-6004 • Fax (985) 414-6072

[www.flowlinevalves.com](http://www.flowlinevalves.com)

# How to Order

## How to Order

## Part Numbering System

Style	Porting	Nema	Size and CV	Connection	Voltage	Coil Rating	Coil Connecting
1	2	3	4	5	6	7	8

1	Style
50	Namur

2	Porting
3001	3 way single coil
4001	4 way single coil
3002	3 way dual coil
4002	4 way dual coil

3	Nema Rating
4	Nema 4, 4X
7	Nema 7,9

4	Size and CV
5	1/8" .78 cv
6	1/4" .89 cv
7	1/4" 1.40 cv
8	1/2" 2.79 cv

5	Connections
N	Namur
P	Pipe In

6	Voltages
1	12VDC
2	24VDC
3	24vac
4	36vac
5	120vac
6	220vac
7	380vac

7	Coil Rating
9	Standard
8	Class F
7	Class H

8	Voltages
A	Cable Clamp
B	Cable Clamp w/ light
C	1/2" Conduit
D	1/2" Conduit w/ light
E	Potted Cable
F	Potted Cable w/ light
G	Potted Coil N-7

*\* Note: Consult factory for additional options.*

**Flow Line Valve and Controls, Inc.**

PO Box 677, 110 Main Project Rd • Schriever, LA 70395 • Phone (985) 414-6004 • Fax (985) 414-6072

[www.flowlinevalves.com](http://www.flowlinevalves.com)